

## Butterfly Valve, Metal

### Construction

The GEMÜ 411 manually operated 2/2 way butterfly valve has an ergonomically designed corrosion-resistant handwheel with integrated locking device.

### Features

- Suitable for inert and corrosive\* liquid and gaseous media
- Insensitive to viscous media
- Versions according to ATEX on request

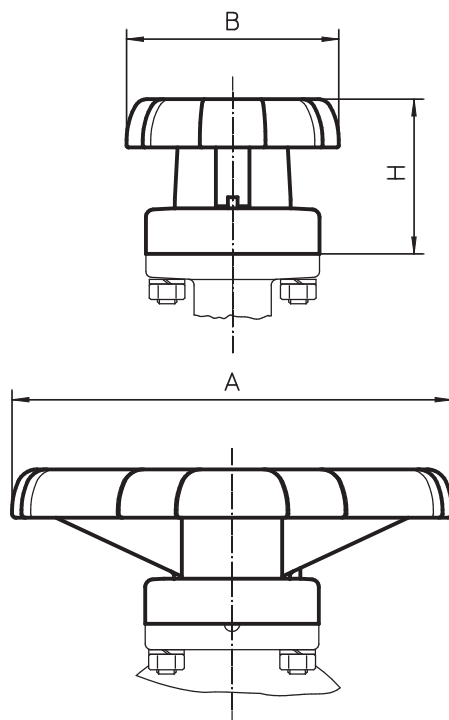
### Advantages

- Various seal materials available to suit the working medium
- Low weight
- Optional accessories
  - Stroke limiter
  - GEMÜ 1225 electrical position indicator with 2 potential-free adjustable limit switches (additional module, can be retrofitted)

\* see information on working medium on page 2



Bonnet dimensions [mm]



DN	A	B	H
15 - 25	118	55	42
32 - 50	160	71	63



## Technical data

Working medium	
Inert, corrosive gaseous and liquid media which have no negative impact on the physical and chemical properties of the body, disc and seal material.	
Max. perm. pressure of working medium	10 bar
Max. perm. temperature of working medium	100° C

DN	Kv value [m <sup>3</sup> /h]		Weight [g]	
	Brass	1.4581	Brass	1.4581
15	7	7*	800	700
20	12	15*	850	700
25	17	20*	900	700
32	40	55*	1050	800
40	60	90*	1600	1200
50	100	140*	2200	1600

\* ISO connection

## Order data

Body configuration	Code
2/2 way	D

Valve body material	Code
MS, Brass only available with threaded socket design	12
1.4581, St. steel investment casting only available with butt weld spigot design	38

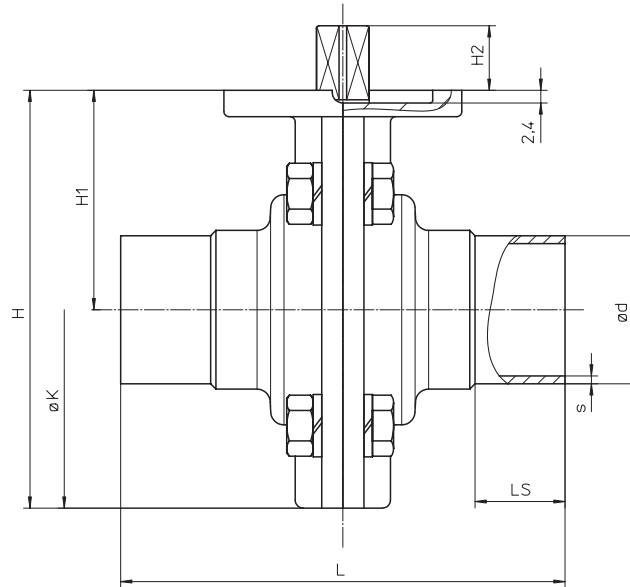
Connections	Code
<b>Butt weld spigots (only valve body material code 38)</b>	
Spigots DIN	0
Spigots DIN 11850, series 1	16
Spigots DIN 11850, series 2	17
Spigots DIN 11850, series 3	18
Spigots SMS 3008	37
Spigots ASME BPE	59
Spigots EN ISO 1127	60
<b>Threaded connections (only valve body material code 12)</b>	
Threaded sockets DIN ISO 228	1

Seal material	Code
FPM	4
PSI, Silicone rubber	9
EPDM	14*
* Material complies with FDA requirements	

Control function	Code
Manually operated	0

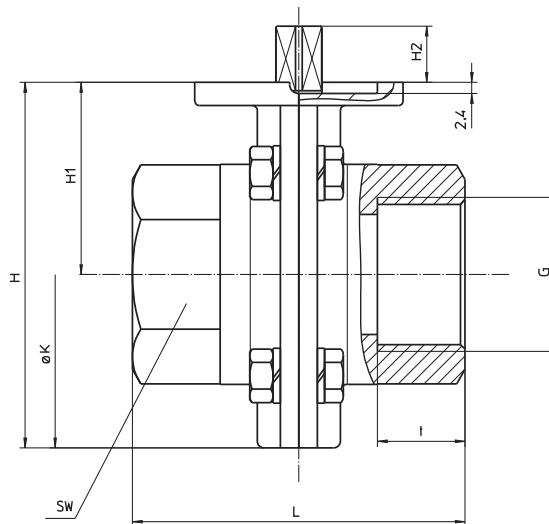
Order data	411	25	D	1	12	14	0
Type	411						
Nominal size		25					
Body configuration (Code)			D				
Connections (Code)				1			
Valve body material (Code)					12		
Seal material (Code)						14	
Control function (Code)							0

## Body dimensions [mm]



### Butt weld spigots

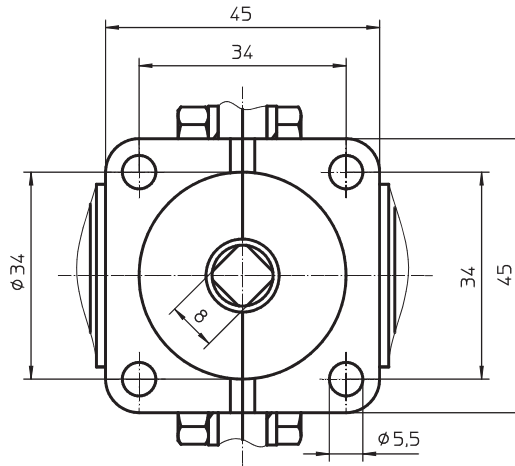
DN	NPS	L	H	H1	H2	øK	LS	DIN series 0; Code 0		DIN 11850 series 1; Code 16		DIN 11850 series 2; Code 17		SMS 3008 Code 37		EN ISO 1127 Code 60		ASME BPE Code 59			
								ød	s	ød	s	ød	s	ød	s	ød	s	ød	s	ød	s
15	1/2"	80	79	41.5	13	75	20	18	1.5	18	1	19	1.5	20	2	-	-	21.3	1.6	12.70	1.65
20	3/4"	84	79	41.5	13	75	22	22	1.5	22	1	23	1.5	24	2	-	-	26.9	1.6	19.05	1.65
25	1"	84	79	41.5	13	75	22	28	1.5	28	1	29	1.5	30	2	25.0	1.2	33.7	2.0	25.40	1.65
32	1 1/4"	88	91	48.0	13	85	25	34	1.5	34	1	35	1.5	36	2	33.7	1.2	42.4	2.0	-	-
40	1 1/2"	96	108	56.0	13	103	25	40	1.5	40	1	41	1.5	42	2	38.0	1.2	48.3	2.0	38.10	1.65
50	2	110	123	65.0	13	116	30	52	1.5	52	1	53	1.5	54	2	51.0	1.2	60.3	2.0	50.80	1.65



### Threaded socket DIN ISO 228

DN	G	H	H1	H2	t	L	øK	SW	Number of wrench surfaces
15	1/2	79	41.5	13	15.0	72	75	27	6
20	3/4	79	41.5	13	16.0	72	75	32	6
25	1	79	41.5	13	19.0	72	75	41	6
32	1 1/4	91	48.0	13	21.4	72	85	50	8
40	1 1/2	108	56.0	13	21.4	83	103	55	8
50	2	123	65.0	13	25.7	83	116	70	8

## Bonnet mounting dimensions [mm]



### Overview of valve bodies for GEMÜ 411

DN	Brass (Code 12)	1.4581, Investment casting (Code 38)						
	Threaded socket Code 1	Butt weld spigots						
		DIN series 0; Code 0	DIN 11850 series 1; Code 16	DIN 11850 series 2; Code 17	DIN 11850 series 3; Code 18	SMS 3008 Code 37	EN ISO 1127 Code 60	ASME BPE Code 59
15	X	X	X	X	X	-	X	X
20	X	X	X	X	X	-	X	X
25	X	X	X	X	X	X	X	X
32	X	X	X	X	X	X	X	-
40	X	X	X	X	X	X	X	X
50	X	X	X	X	X	X	X	X

For plastic butterfly valves up to DN 250 mm and metal butterfly valves up to DN 1200 mm as well as accessories please refer to separate data sheets.  
Contact GEMÜ.



**GEMÜ**® VALVES, MEASUREMENT  
AND CONTROL SYSTEMS