

High Purity Diaphragm Valve, Plastic

Construction

The GEMÜ 677 HPW 2/2 way diaphragm valve has a low maintenance bonnet with an ergonomically designed handwheel and an integral optical position indicator. All medium wetted parts are made of PFA (body) and PTFE (diaphragm).

Features

- Suitable for inert and corrosive* liquid and gaseous media, particularly high purity media
- All medium wetted parts and the housing are made of high quality plastic materials
 - Valve body: PFA-Inliner/PVDF-Outliner (carbon-filled)
 - Diaphragm material: PTFE/EPDM
- Bonnet: PP glass fiber reinforced
- Assembled, tested and packaged under class 100 cleanroom conditions

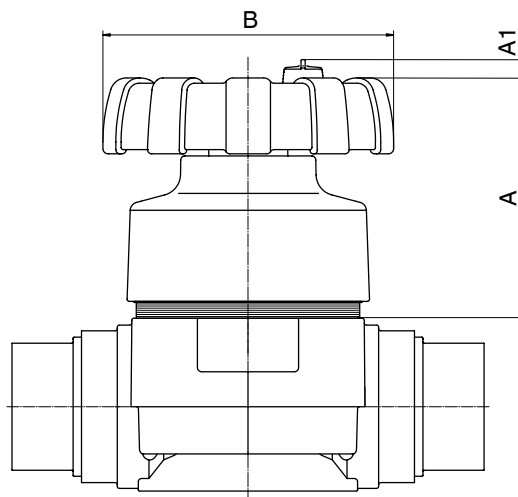
Advantages

- Good K_v / C_v value
- Minimal deadleg
- Optional flow direction, will seal in either flow direction up to full working pressure
- Due to its design (diaphragm valve, i.e. soft flow deviation) also particularly suitable for polishing agents and slurries
- Optional mounting position
- Optional accessories
 - Electrical position indicator
 - Locking device

* see information on working medium on page 2



Main dimensions [mm / inch]



Nominal size	ø B	A	A1
40	114 / 4.49	89 / 3.50	8 / 0.31
50	140 / 5.51	107 / 4.21	9 / 0.35

Technical data

Working medium

Corrosive, inert, gaseous and liquid media which have no negative impact on the physical and chemical properties of the body and diaphragm material.

Working temperature

Max. 90°C (194°F), higher temperatures upon request depending on working pressure

Ambient temperature

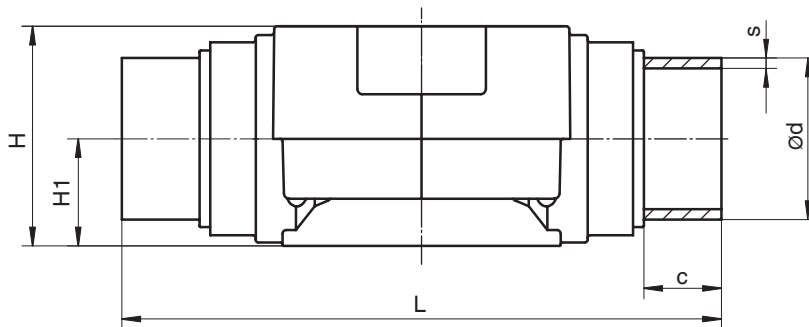
60°C (140°F)

Nominal size	Working pressure	Kv value	Cv value	Weight
	[bar]	[m ³ /h]	[US gal/min]	
1 1/2" pipe DN 40	0 - 6	25.0	29.3	1.7
2" pipe DN 50	0 - 6	46.0	53.8	2.8

All pressures are given as gauge pressures.

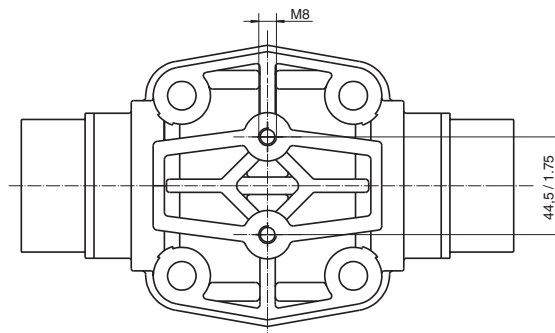
Body dimensions [mm / inch]

Imperial butt weld spigots , connection code 30



Nominal size	L	H	H1	Ød	s	c
40	192 / 7.56	74 / 2.91	40 / 1.6	50 / 1.97	3,7 / 0.15	33 / 1.32
50	224 / 8.82	82 / 3.23	40 / 1.6	63 / 2.48	3,9 / 0.15	29 / 1.14

Mounting holes [mm / inch]



Order data

Nominal size	Code
1 1/2" pipe DN 40	40
2" pipe DN 50	50

Diaphragm material	Code
PTFE/EPDM	5E

Body configuration	Code
2/2 way body	D

Control function	Code
Manually operated	
Manually operated, with lockable handwheel	L

Connection	Code
Imperial butt weld spigots	30

Option	Code
Mounting thread for position indicator GEMÜ 1215	Z

Valve body material	Code
PFA-Inliner/PVDF-Outliner (carbon filled)	23

High Purity version	Code
High Purity white	HPW

Order example	677	50	D	30	23	5E	0	Z	HPW
Type	677								
Nominal size		50							
Body configuration (code)			D						
Connection (code)				30					
Valve body material (code)					23				
Diaphragm material (code)						5E			
Control function (code)							0		
Option (code)								Z	
High Purity design (code)									HPW

Futher HP valves



GEMÜ 600 HP



CleanStar® C60



CleanStar® C60/C67



CleanStar® C67

Further High Purity products



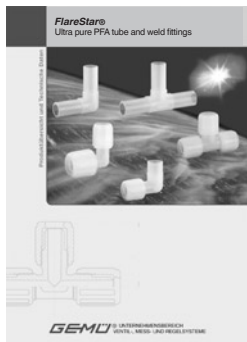
HydraLine®
Pressure Measurement
Systems



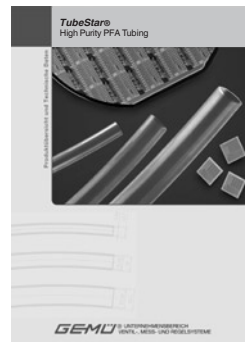
PurePlus®
High Purity PVDF/PP
Valves and Flowmeters



SonicLine®
Ultra-Sonic Flowmeters



FlareStar®
Ultra Pure PFA
Tube and Weld Fittings



TubeStar®
High Purity PFA Tubing

For further plastic diaphragm valves, accessories and other products, please see our Product Range catalogue and Price List. Contact GEMÜ.

GEMÜ® VALVES, MEASUREMENT
AND CONTROL SYSTEMS

