

Solenoid Valve, Metal

Construction

GEMÜ 8303 is a 3/2-way solenoid valve requiring differential pressure. The body is made of brass or stainless steel. The plastic encapsulated coil is detachable. The electrical connection is made via a plug to DIN EN 175301-803 form A.

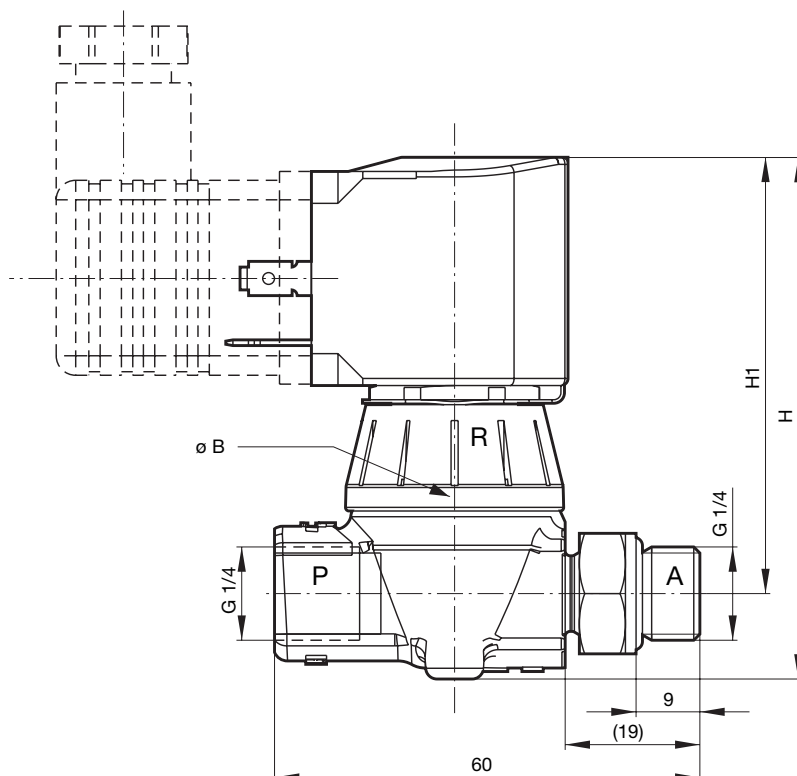
Features

- Filtered, lubricated or unlubricated compressed air is a suitable working medium

Advantages

- The valve can be mounted in any position
- Simple coil replacement without tools (**Click-on®**)
- Standard silenced venting
- The coil can be replaced without removing the valve body from the pipeline
- Standard G 1/4 threaded nipple

Dimensions [mm]



H	H1	øB
73.6	61.5	31.0



Technical data

Operating medium

Filtered, lubricated or unlubricated compressed air, which has no negative impact on the physical and chemical properties of the body and seal material.

Perm. temperature of working medium -10° C to +60° C

Permissible voltage tolerance

±10 % to VDE 0580

Technical data

Rating	continuously rated
Protection class	IP 65
Switching time	On 8.5 ms
	Off 30.4 ms

Power consumption

AC operation	pull in	15 VA
	hold in	12 VA
DC operation		8 W

Nominal size	Operating pressure	K _v -value	Weight
[DN]	[bar]	[m³/h]	[kg]
2	1.0 - 10	1.2	0.4

Order data

Body configuration

Code

Multi-port

M

Control function

Code

Normally closed

1

Connection

Code

Threaded sockets DIN ISO 228

1

Supply voltage

Code

24V DC

24

24V 50 Hz AC

24

110V 50 Hz AC

110

230V 50 Hz AC

230

Other voltages and Ex-version on request.

Valve body material

Code

Brass

12

Stainless steel, 1.4581

38

Seat material

Code

NBR, Perbunan N

2

Frequency

Code

50 Hz

50

DC

DC

Order example

8303 002 M 1 12 2 1 230 50

Type	8303	002	M	1	12	2	1	230	50
Nominal size	8303	002							
Body configuration (code)			M						
Connection (code)				1					
Valve body material (code)					12				
Seat material (code)						2			
Control function (code)							1		
Supply voltage (code)								230	
Frequency (code)									50

GEMÜ® VALVES, MEASUREMENT
AND CONTROL SYSTEMS

