

Butterfly Valve, Metal

Construction

The GEMÜ 415 pneumatically operated 2/2 way butterfly valve has a maintenance-free corrosion-resistant plastic piston actuator. Normally Closed, Normally open and Double Acting control functions are available.

Features

- Suitable for inert and corrosive* liquid and gaseous media
- Insensitive to viscous media
- Versions according to ATEX on request

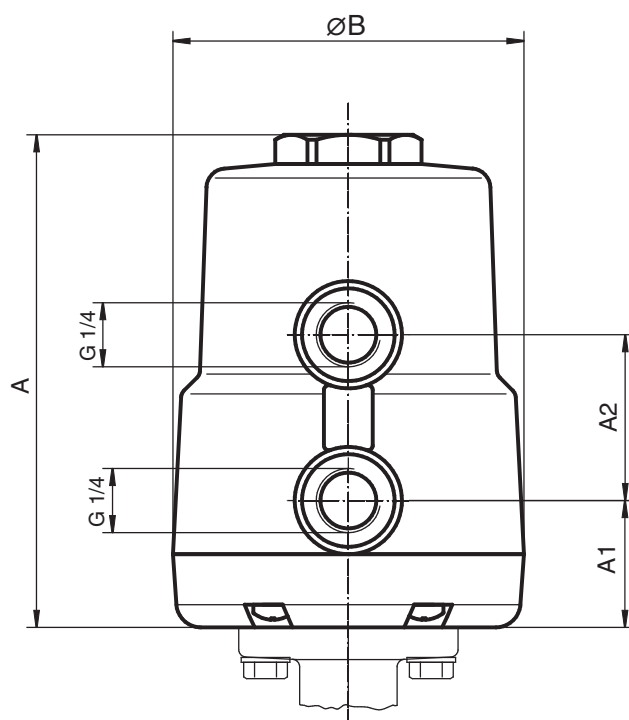
Advantages

- Various seal materials available to suit the working medium
- Low weight
- Optional accessories
 - GEMÜ 1225 electrical position indicator with 2 potential-free, adjustable limit switches (additional module, can be retrofitted)
 - Stroke limiter
 - Optical position indicator

* see information on working medium on page 2



Actuator dimensions [mm]



Actuator size	DN	Ø B	A	A1	A2
Actuator 0	15 - 25	72	112	37	34
Actuator 1	32 - 50	97	177	41	65

Technical data

Working medium	
Inert, corrosive gaseous and liquid media which have no negative impact on the physical and chemical properties of the body, disc and seal material.	
Max. perm. pressure of working medium	10 bar
Max. perm. temperature of working medium	100°C
Max. ambient temperature	60°C

Control medium	
Inert gases	
Max. control pressure	6 bar
Max. perm. temperature of control medium	60°C
Filling volume actuator 0	0.05 dm ³
Filling volume actuator 1	0.2 dm ³
Other control media upon request	

Nominal size DN	Control pressure [bar]				Kv value [m ³ /h]		Weight [g]	
	Control function 1		Control function 3		Brass (Code 12)	1.4581 (Code 38)	Brass (Code 12)	1.4581 (Code 38)
Actuator 0	Actuator 1	Actuator 0	Actuator 1					
15	5.5 - 6,0	-	3 - 6	-	7	7*	1000	900
20	5.5 - 6,0	-	3 - 6	-	12	15*	1050	900
25	5.5 - 6,0	-	3 - 6	-	17	20*	1100	900
32	-	5.5 - 6,0	-	3 - 6	40	55*	1550	1300
40	-	5.5 - 6,0	-	3 - 6	60	90*	2600	2200
50	-	5.5 - 6,0	-	3 - 6	100	140*	3200	2600

* ISO connection. All pressures are given as gauge pressures.

Order data

Body configuration	Code
2/2 way	D

Connections	Code
Butt weld spigots (only valve body material code 38)	
Spigots DIN	0
Spigots DIN 11850, series 1	16
Spigots DIN 11850, series 2	17
Spigots DIN 11850, series 3	18
Spigots SMS 3008	37
Spigots ASME BPE	59
Spigots EN ISO 1127	60
Threaded connections (only valve body material code 12)	
Threaded sockets DIN ISO 228	1

Valve body material	Code
MS, Brass only available with threaded socket design	12
1.4581, St. steel investment casting only available with butt weld spigot design	38

Seal material	Code
FPM	4
PSI, Silicone rubber	9
EPDM	14*
* Material complies with FDA requirements	

Control function	Code
Normally closed (NC)	1
Normally open (NO) (by rotating the actuator 90° during assembly)	2
Double acting (DA)	3

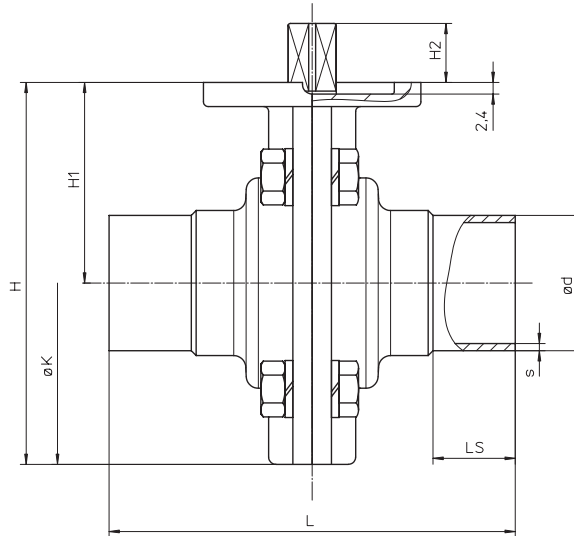
Actuator size	Code
Actuator ø 50 mm	0
Actuator ø 70 mm	1

Order example	415	25	D	1	12	14	3	0
Type	415							
Nominal size		25						
Body configuration (Code)			D					
Connection (Code)				1				
Valve body material (Code)					12			
Seal material (Code)						14		
Control function (Code)							3	
Actuator size (Code)								0

Body dimensions [mm]

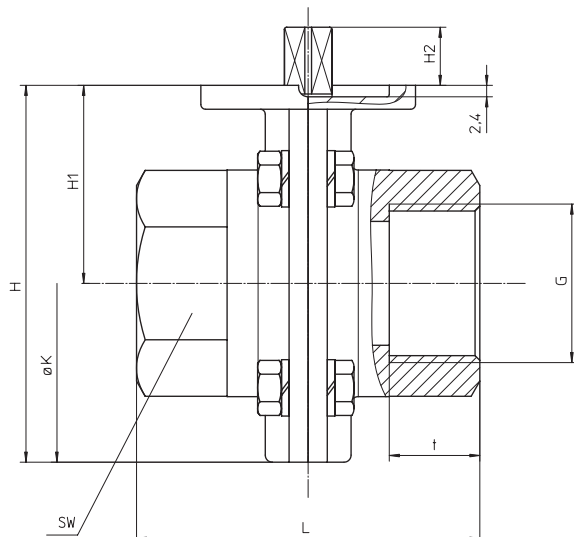
Butt weld spigots

DN	NPS	L	H	H1	H2	øK	LS	DIN series 0; Code 0		DIN 11850 series 1; Code 16		DIN 11850 series 2; Code 17		DIN 11850 series 3; Code 18		SMS 3008 Code 37		EN ISO 1127 Code 60		ASME BPE Code 59	
								ød	s	ød	s	ød	s	ød	s	ød	s	ød	s	ød	s
15	1/2"	80	79	41.5	13	75	20	18	1.5	18	1	19	1.5	20	2	-	-	21.3	1.6	12.70	1.65
20	3/4"	84	79	41.5	13	75	22	22	1.5	22	1	23	1.5	24	2	-	-	26.9	1.6	19.05	1.65
25	1"	84	79	41.5	13	75	22	28	1.5	28	1	29	1.5	30	2	25.0	1.2	33.7	2.0	25.40	1.65
32	1 1/4"	88	91	48.0	13	85	25	34	1.5	34	1	35	1.5	36	2	33.7	1.2	42.4	2.0	-	-
40	1 1/2"	96	108	56.0	13	103	25	40	1.5	40	1	41	1.5	42	2	38.0	1.2	48.3	2.0	38.10	1.65
50	2	110	123	65.0	13	116	30	52	1.5	52	1	53	1.5	54	2	51.0	1.2	60.3	2.0	50.80	1.65

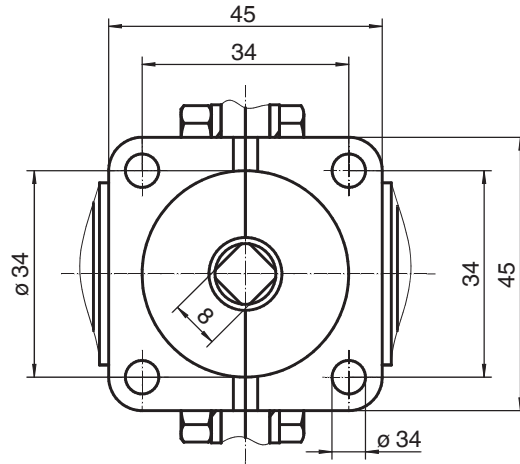


Threaded sockets DIN ISO 228

DN	G	H	H1	H2	t	L	øK	SW	Number of wrench surfaces
15	1/2	79	41.5	13	15.0	72	75	27	6
20	3/4	79	41.5	13	16.0	72	75	32	6
25	1	79	41.5	13	19.0	72	75	41	6
32	1 1/4	91	48.0	13	21.4	72	85	50	8
40	1 1/2	108	56.0	13	21.4	83	103	55	8
50	2	123	65.0	13	25.7	83	116	70	8



Bonnet mounting dimensions [mm]



Overview of valve bodies for GEMÜ 411

DN	Brass (Code 12)	1.4581, Investment casting (Code 38)						
	Threaded socket Code 1	Butt weld spigots						
		DIN series 0; Code 0	DIN 11850 series 1; Code 16	DIN 11850 series 2; Code 17	DIN 11850 series 3; Code 18	SMS 3008 Code 37	EN ISO 1127 Code 60	ASME BPE Code 59
15	X	X	X	X	X	-	X	X
20	X	X	X	X	X	-	X	X
25	X	X	X	X	X	X	X	X
32	X	X	X	X	X	X	X	-
40	X	X	X	X	X	X	X	X
50	X	X	X	X	X	X	X	X

For plastic butterfly valves up to DN 250 mm and metal butterfly valves up to DN 1200 mm
as well as accessories please refer to separate data sheets.
Contact GEMÜ.



GEMÜ® VALVES, MEASUREMENT
AND CONTROL SYSTEMS