

Solenoid Valve, Metal

Construction

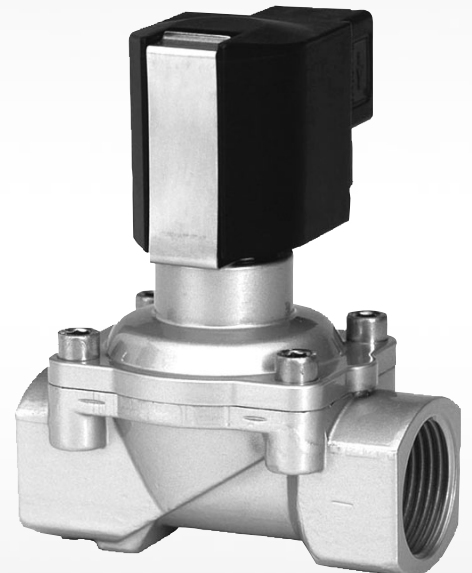
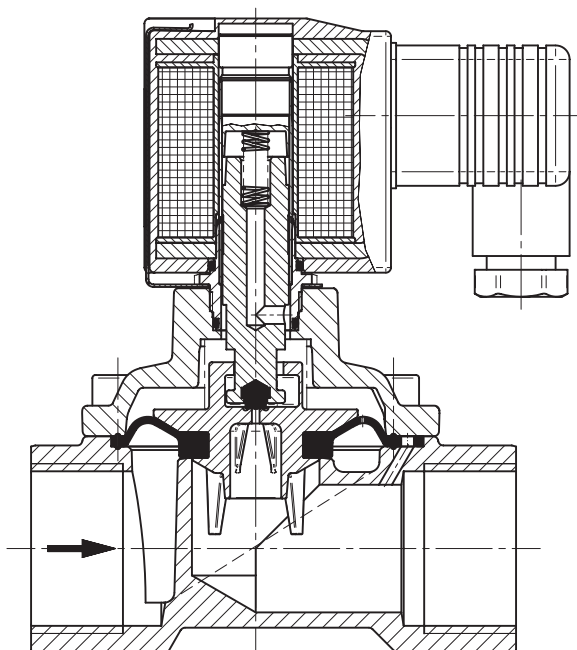
The GEMÜ 8253 2/2-way solenoid valve with a positive lift diaphragm has a brass or stainless steel valve body. All medium wetted parts are made of NBR, FPM, EPDM, PVDF, brass or stainless steel.

The electrical connection is made via a plug to DIN EN 175301-803 form A. The coil has isolation class F as standard. The valve is suitable for inert media such as air, water and oil.

Advantages

- Valve operates without minimum pressure differential (Δp)
- Excellent flow capability
- Soft closing action
- Suitable for vacuum applications
- Simple coil replacement without tools (**Click-on®**)
- NPT thread available
- Explosion protected solenoids acc. to ATEX available as an option
- UL and CSA approvals available
- Normally open available as an option

Sectional drawing GEMÜ 8253



Technical data

Working medium

Inert gaseous and liquid media which have no negative impact on the physical and chemical properties of the body and seal material.

Max. perm. viscosity of working medium

25 mm²/s (cSt)

Note: When used with contaminated media we recommend installing a strainer in front of the valve (on request)

Power consumption

AC operation:

Pull in / hold in		
DN 8 - 25	Control function 1	20 VA
DN 32 - 50	Control function 2	45 VA
DN 32 - 50	Control function 1	42 VA

DC operation:

Pull in / hold in		
DN 8 - 25	Control function 1	18 W
DN 8 - 25	Control function 2	38 W
DN 32 - 50	Control function 1	38 W

Perm. temperature of working medium

-10° to +90° C

Higher temperatures on request

Protection class

IP 65 (with plug)

Ambient temperature

-10° to +50° C

Permissible voltage tolerance

±10 % to VDE 0580

Mounting position

Optional, preferably coil vertically upwards

Rating

Continuously rated

Nominal size	Threaded socket connections		Operating pressure	K _V value	Weight [kg]	
[mm]	DIN ISO 228 (code 1)	NPT (code 31)	[bar]	(m ³ /h)	Brass (code 12)	Stainless steel (code 37)
8	G 1/4	1/4" NPT	0 - 10	1.9	0.7	0.8
10	G 3/8	3/8" NPT	0 - 10	3.0	0.7	0.8
15	G 1/2	1/2" NPT	0 - 10	3.4	0.8	0.8
20	G 3/4	3/4" NPT	0 - 10	5.8	0.9	1.0
25	G 1	1" NPT	0 - 10	8.0	1.3	1.3
32	G 1 1/4	1 1/4" NPT	0 - 16	23.0	4.3	4.3
40	G 1 1/2	1 1/2" NPT	0 - 16	25.0	4.1	4.3
50	G 2	2" NPT	0 - 16	41.0	5.1	5.4

Notes

Installation note

Caution: DC solenoids are designed for unsmoothed voltages, e.g. as obtained from a bridge rectifier.

Wiring note:

Special wiring on request. When using electronic switches and additional wiring avoid inadmissible residual currents by proper design.

Order data

Body configuration	Code
2/2-way	D

Connection	Code
Threaded sockets DIN ISO 228	1
Threaded sockets NPT	31


Valve body material	Code
Brass, MS	12
Stainless steel, 1.4408	37

Seal material	Code
NBR (Perbunan)	2
Other seal materials on request.	

Control function	Code
Normally closed	1
Normally open	2

Supply voltage	Code
24 V AC	24
110 V AC	110
230 V AC	230
24 V DC	24

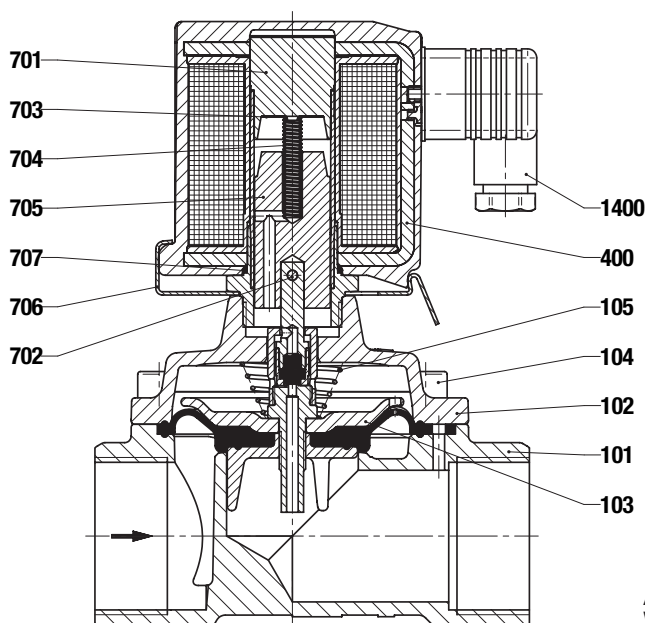
Mains frequency	Code
50 Hz	50
DC	DC

Optional versions	K-Number
Coil protection class EEx me II T3 ATEX marking  II 2 GD	6419
Other versions acc. to ATEX or US regulations on request	

Available voltages / Frequency		
AC	24 V AC	50 Hz
	110 V AC	50 Hz
	230 V AC	50 Hz
DC	24 V DC	-

Order example	8253	25	D	1	12	2	1	230	50/60	6419
Type	8253									
Nominal size		25								
Body configuration (code)			D							
Connection (code)				1						
Valve body material (code)					12					
Seal material (code)						2				
Control function (code)							1			
Supply voltage (code)								230		
Mains frequency (code)									50/60	
Optional version (K-no.)										6419

Spare parts

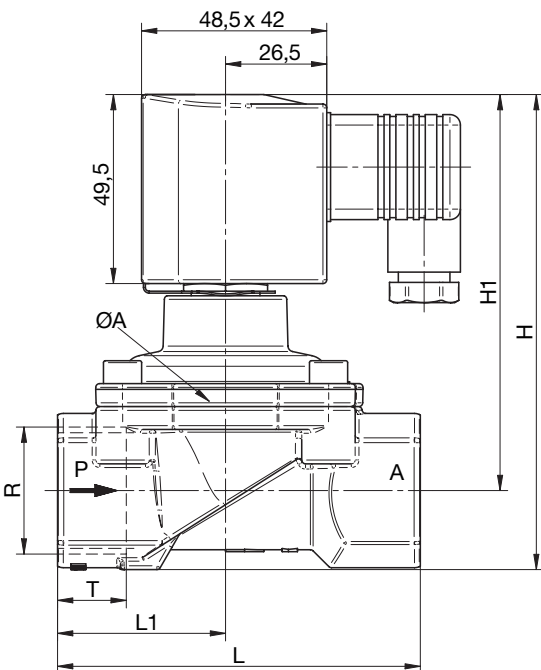


- 101 Valve body
- 102 Body cover
- *103 Diaphragm
- 104 Cylindrical screw
- *105 Compression spring
- 400 Solenoid
- 701 Bush
- *702 DN 8-25 O-ring
- *702 DN 32-50 cylindrical pin
- 703 Round plate
- *704 Compression spring
- *705 Armature
- 706 Spring clip
- *707 O-ring
- 1400 Plug (included)

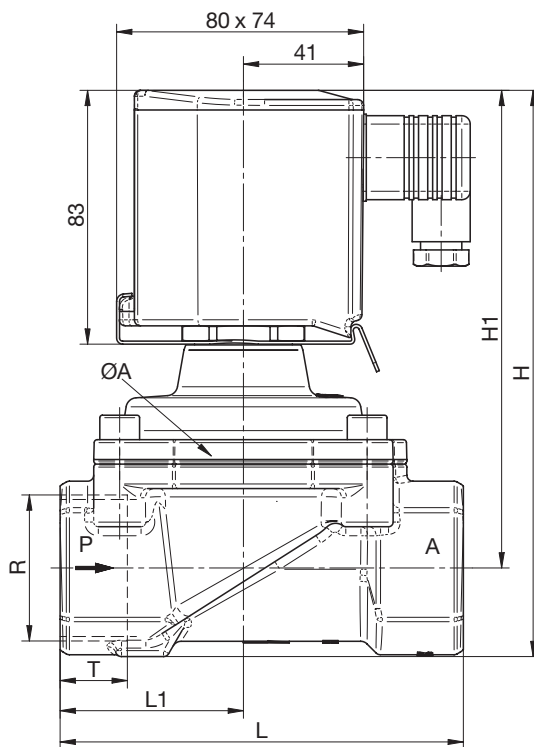
All the parts marked * are included in the wearing parts kit.
When ordering spare parts, please state the complete valve order number.

Dimensional drawings - GEMÜ 8253

DN 8 - DN 25



DN 32 - DN 50



Body dimensions GEMÜ 8253 [mm]

DN	øA	H	H1	L	L1	Threaded sockets DIN ISO Connection code 1		Threaded sockets NPT Connection code 31	
						R	T	R	T
8	44	104.0	92.5	60	27.5	G 1/4	12.0	1/4" NPT	10.0
10	44	104.0	92.5	60	27.5	G 3/8	12.0	3/8" NPT	10.5
15	44	108.0	94.5	67	31.0	G 1/2	14.0	1/2" NPT	13.5
20	50	115.0	99.0	80	36.5	G 3/4	16.0	3/4" NPT	14.0
25	62	124.0	103.5	95	44.0	G 1	18.0	1" NPT	17.0
32	92	186.0	157.0	132	60.0	G 1 1/4	20.0	1 1/4" NPT	17.0
40	92	186.0	157.0	132	60.0	G 1 1/2	22.0	1 1/2" NPT	17.0
50	109	201.5	167.0	160	74.0	G 2	24.0	2" NPT	17.5

For other solenoid valves, accessories and other products,
please see our Product Range catalogue and Price List.
Contact GEMÜ.